

Twickenham & Richmond TRIBUNE



Contents
 TwickerTape
 TwickerSeal
 History Through Postcards
 COVID-19
 Borough Photos
 Not a Lot of People Know
 Marble Hill Marvels
 River Crane Sanctuary
 Twickers Foodie
 WIZ Tales
 Arts Reviews
 LBRUT

Contributors
 TwickerSeal
 Alan Winter
 Gail Francis-Tiron
 Graeme Stoten
 Sammi Macqueen
 Sue Hamilton-Miller
 Alison Jee
 Mark Aspen
 Doug Goodman
 Richmond Film Society
 LBRUT

Editors
 Berkley Driscoll
 Teresa Read



Rainbows at The Prince Albert, Twickenham
 Photo by Berkley Driscoll

TickerTape - News in Brief

Lynn Faulds Wood

We are sad to hear of the death today of well-known local resident Lynn Faulds Wood

St Georges Day

It's difficult to keep up with the days, but did you realise that Thursday 23rd was St George's Day?

Grants available for local sports clubs and organisations

Local sporting clubs and community organisations are encouraged to apply for a grant to help keep the borough active during the coronavirus pandemic. Sport England has made up to £195 million of funding available to help its partners, clubs and community organisations cope with the impact of COVID-19.

The Sport England website has full details, including the [application process for the new Community Emergency Fund](#).

Richmond at top end of league table for issuing COVID-19 business grants

Richmond Council is at the top end of the UK league table for distributing grants to local businesses who are struggling during the pandemic. On Monday 20 April the Government published data on the amount of money distributed to SMEs by every local authority (314 authorities) in England as part of the two grant schemes launched to help businesses deal with coronavirus. Richmond is the top 4th Council in London, and 19th in the country, issuing over £31m to around 1,872 local businesses. With Council officers working day and night to process applications and get funding into people's bank accounts.

Eligible businesses can [submit their application online](#).

Fox Poisoning

There have been reports of poisoned meat being left out in the Bushy Park residential area, allegedly aimed at foxes; residents have expressed concern for their pets.

Radnor Gardens Cafe

The cafe in Radnor Gardens will be opening this weekend from 10am, takeaway only.

skyelectrical

Replacing your halogen recessed lights with LEDs will:

- ✓ SAVE ENERGY
- ✓ SAVE YOU MONEY
- ✓ PROVIDE BETTER LIGHTING

So...

- ✓ CALL US TODAY FOR A FREE HOME ASSESSMENT AND QUOTE

For a timed appointment please call Sky Electrical on 020 8894 1799

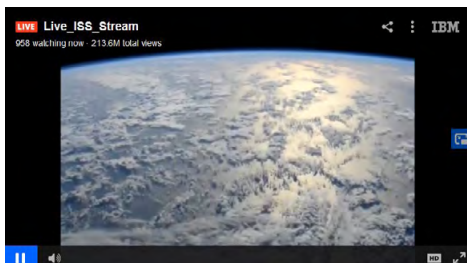
22 Fifth Cross Road, Twickenham, Middlesex, TW2 5LF

www.skyelectrical.co.uk

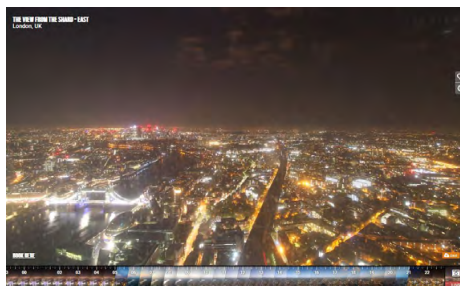
020 8894 1799
info@skyelectrical.co.uk



In this time of lockdown, it is easy to forget what lies beyond our four walls, and Netflix, but you can still explore thanks to the wonders of the internet and webcams. *Click on images to view webcams*



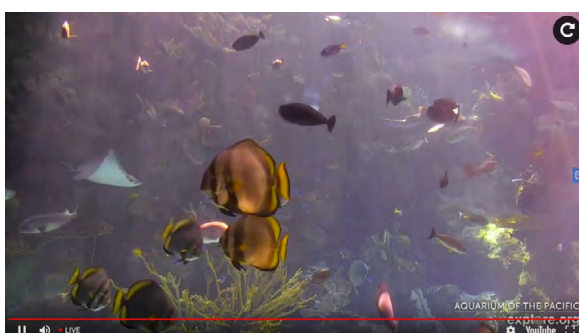
Live video from the International Space Station



Live view from The Shard



Live Penguin Cam
(You can also choose Panda Cam, Tiger Cam, Koala Cam and Rockhopper Penguin Cam)



Live cam Tropical Reef Aquarium, Long Beach, California



Live cam Big Fisherman Cove, Catalina Island, California



Live cam Tsavo East National Park, Kenya



Image courtesy of NASA and the Space Telescope Science Institute (STScI)

Today we will have a look at F.W. Woolworth & Co. Ltd. I'm pretty sure that most of our readers will be familiar with the store which had at least 6 branches in the Tribune's catchment area of the London Borough of Richmond upon Thames at its peak.

Because the store nearly always grabbed a prime High Street location it often appeared on postcards between 1909 when the first Woolworths UK branch opened in Liverpool on 5 November with a performance by a full orchestra, circus acts and fireworks and almost one hundred years later in 2008 when it disappeared forever as part of the retail merry-go-round we have seen in the last 30 years or so.



We will focus on the Twickenham branch at 18 – 22 King Street this week purely because I have some postcards that feature this branch. Woolworths opened in Twickenham in 1928 and was numbered store no. 333. It stayed at that same building in King Street for 80 years! It was a large 2-storey purpose-built store. Our first postcard shows the store in 1938 and is a classic shop frontage of the period. As per the fascia advertising, Woolworths knew its market and the 3d and 6d prices were flagged and advertised for decades.

As a young lad in the 60's it was a real treat to go shopping with mum on a Saturday and be allowed to buy a toy soldier or cowboy or red indian for about sixpence (two and a half pence in today's money).

We then move into the 1960's and I'm sure many of us used the café in Woolworths on a Saturday morning after buying the latest Beatles single at the record counter for 6 shillings and eight pence (6s/8d). A special treat was to stop at the pick and mix sweet counter which was quite a retail innovation in its day.

Our second postcard is a real piece of High Street history and this photo was probably taken from a first floor window at Barclays Bank and shows Woolworths position three shops away from the George public house that is still there today.

The interesting thing here are the three shops between them. Menswear



chain Burtons is next to the pub with shoe chain Freeman Hardy and Willis next to it. Between this shoe shop and Woolworths is none other than J. Sainsburys. I remember this shop so well in the 50's with the staff wearing blue and white striped aprons and straw boater hats. The shop was tiled inside and out and had liberal sprinklings of sawdust on the floor. Essentially a butchers that sold eggs and butter, cheese was cut to order from huge rounds of cheddar. They also sold broken biscuits I recall. Each Sainsburys shop was designed with a wooden sentry box at the rear of the store with a lady sitting inside who controlled the cash and acted as both the till and change giver so that the people behind the counter didn't have to touch dirty coinage while handling food. Our younger readers may not know that this was still 20 odd years before credit cards were invented and so our pockets and purses were full of heavy pre-decimal coinage. Notice I called Sainsbury's a shop rather than a supermarket. That's exactly what it was. Supermarkets came later in the mid to late sixties.

Back to Woolworths who, as we entered the seventies now had over 800 stores in the UK but were facing serious competition from the supermarkets which were bigger and often out of town. The daily high street shop had to change as more and more women went out to work and shopping was done once a week by car on a Saturday. Woolworths had lost their retail dominance but continued on for another 20 years or so.



In the late 1990s Woolworths went through a change of direction and decided to turn hundreds of its branches into a General Store with a new branding. Twickenham was one of them. Please see image 3 which is a photograph of Woolworths in 2008. Clinton cards is now next door where once Sainsbury's had been.

It didn't really work and the General Stores were turned back into normal Woolworths stores in the early 2000s, but Twickenham

branch kept its General Store sign right up until the end of trading in December 2008. It was all over and what had once been one of the most profitable high street based chain stores disappeared completely in the UK.

The King Street premises became some sort of Clearance Store for smoke-damaged furniture for a while but now it is a Poundland which in many ways is probably the Woolies of today. To bring us up to date, image number 4 shows Poundland pretty much as it is now. Once again the brand name doesn't sit comfortably with its mission statement - 'Poundland is a one price retailer selling a wide range of household goods, games, gifts, DIY materials and tools and confectionery.' Today you will find a range of products for sale at a higher price than a pound. So history has repeated itself in this fine old building at 18-22 King Street.



We will have a look at some of the other local Woolworth branches in future issues. If you have any postcards or photos of their stores in Whitton, Teddington, Richmond or East Sheen that we can use, please let me know.

History can be as much about memories as bricks and mortar so why not send your memories of Woolworth stores in the borough to the Tribune's letters page. Did you work at any of the local branches? Have you got a memorable story? Which local celebrities did you spot shopping at Woolies? We will publish a selection next week and the writer of the most interesting letter will win a pound to spend at Poundland! Get writing and send by email to: - letters@twickenhamtribune.com or to me at the email address below.

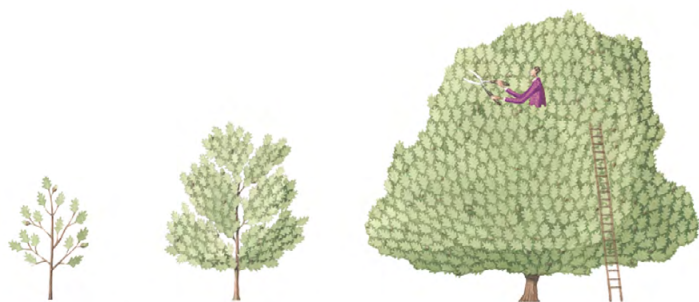
With many of us confined to home at present it may be that you are using the time to tidy a few drawers or have a bit of a clear-out. If you trip over any old postcards, old envelopes with stamps on, or photograph albums that you would consider parting with, I'd be very interested in arranging to see them. Please contact me on 07875 578398 or by email at alanwinner192@hotmail.com I am happy to pay cash for anything like that which I find of interest. So don't throw old postcards etc. in the skip or recycling bins. Show them to me first! Thanks, stay safe and well.

Postcard Competition Winner!

After a couple of weeks of searching, we have finally unearthed a postcard that was used in 1928 showing the re-built Derby Arms public house on the Upper Richmond Road. We have shown images of the original 19th century pub in the last couple of issues but struggled to find a postcard of it since its re-build.

The pub closed for good in 1987. Harvey Court, named after Len Harvey who was a champion boxer and landlord of the pub in the 50s and 60s now stands on the site.

So my thanks to reader and local historian Howard Webb who came up with the postcard shown here. Howard's much coveted prize will be a couple of pints in a local pub of his choice when we get back to some sort of normality. Thanks Howard.



The Tree Agency

darryl parkin

The Treehouse
25 King Edwards Grove
Teddington, Middlesex TW11 9LY
Telephone 020 8274 0107
Mobile 07960 123580
Fax 020 8274 0119
info@thetreeagency.co.uk
www.thetreeagency.co.uk

The Tree Agency





RFS The Best of our Recent Historic Screenings

Issue 5, 24th April 2020

WILD TALES

A new series for those of you who are missing Richmond Film Society's screenings or, indeed, trips to the cinema generally as a result of the COVID-19 crisis. Their committee is producing a number of weekly recommendations of films screened during the last 20 years that were extremely well received by their audiences. Should the notes reproduced below entice you to try and catch-up with this recommendation, then you should be able to do so, as it is available on streaming services and for purchase as DVD/Blu-Ray discs from the online retailers as indicated below.

RFS Context: WILD TALES was 747th film screened by RFS on 21st January 2016. Wild Tales was the equal top ranked film of Season 53 (it was paired at the top of that season's rankings with **Salt of The Earth**, which we plan to cover in our Issue 8 in May), it got an approval mark of 96% from those attending. The film can be streamed from Amazon Prime and Curzon and the discs are available from Amazon and others.

WILD TALES (Relatos salvajes)

Country: Argentina, 2014
Director: Damián Szifron
Screenplay: Damián Szifron
Editor: Pablo Barbieri Carrera
Running Time: 120 mins, colour
Language: Spanish
Cinematography: Javier Julia
Music: G ustavo Santaolalla

Leading Players:

Dario Grandinetti (Salgado)
Maria Marull (Isabel)
Mónica Villa (Profesora Leguizamón)
Rita Cortese (Cocinera)
Julieta Zylberberg (Moza)
César Bordón (Cuenca)
Leonardo Sbaraglia (Diego)
Walter Donado (Mario)



Written and directed by Damián Szifron and co-produced by the Almodóvar brothers, **Wild Tales** is an edgy and twisted black comedy, comprising six unrelated vignettes, all of which revolve around the theme of revenge and retribution. The factual backcloth to each is different, as they explore, amongst other things, the consequences of personal rejection, road-rage, infidelity and a proliferation of unjustified parking tickets. In each case, the characters find themselves caught up in seemingly mundane situations that escalate dramatically and push them to breaking point, resulting in what Szifron has described as “the undeniable pleasure of losing control”.

While some stories inevitably work a little better than others (they all vary in length), the film manages to retain an extremely cohesive feel, thanks to the thematic links, the overall pacing and the subversive and mordant black humour which pervades every scene.

As well as examining the dark side of human nature, a number of critics have also seen **Wild Tales** in terms of a social satire on issues such as class in contemporary Argentina. For example, Peter Bradshaw of the Guardian interprets it as “raging at the complacency and mediocrity of Argentina’s ruling classes.” An alternative view is that this is not a film which seeks to provide a profound insight into the human condition but one which offers its audience high energy, inventive and raucous entertainment.

Wild Tales enjoyed great success at the Argentine box office and, following its acclaimed premiere at Cannes, went on to become a huge hit on the international festival circuit. Unusually for a film positioned outside the traditional art-house space, it was shortlisted for the 2014 Best Foreign Language Film Oscar. It went on to become the highest grossing foreign language film at the 2015 UK box office and sits fourth in the all-time UK list of South American films.

Peter Maguire with acknowledgment to ‘The Guardian’

Borough View

By Graeme Stoten

'Chihuly at Kew' - part 1

In keeping with a retrospective theme for the next few weeks, I return to this time last year, and a visit to the 'Chihuly' glass sculpture exhibition at Kew. Both amongst the landscape, and installation within the glasshouses, the visitor discovers a stunning juxtaposition of Chihuly's vivid art and the wonderful biodiversity of plant life at Kew.



New mental health emergency service now open

A new Mental Health Emergency Service has opened to help support residents during the pandemic.

The Orchid Mental Health Emergency Service has opened at Springfield Hospital. The innovative 24/7 health emergency department cares for patients with mental health problems who would otherwise have had to go to A&E. Patients of all ages are accepted, including children.

The aim is to create a mental health alternative to acute hospital emergency departments, for as long as the coronavirus pandemic continues, where patients of any age (including children) who have been triaged or rung ahead on a dedicated number, will be able to attend a mental health emergency department.

This new service will take much needed pressure off local acute trusts who are dealing with the full brunt of the pandemic.

This dedicated Mental Health Emergency Department will ensure anyone in crisis, who does not have serious physical health needs, will be able to receive specialist care from expert mental health professionals day or night.

Consultant Psychiatrist and Clinical Director for Acute and Urgent Care at South West London and St George's Mental Health Trust Dr Sean Whyte said:

"We are extremely proud to be setting up the country's first all-age mental health emergency service at Springfield University Hospital. It represents the hard work of scores of staff alongside their day jobs, as well as a small group of service users who co-designed aspects of the service with us.

"Our business is providing the best possible care for those with mental health conditions and right now, this mission is more important than ever. That's why, in just one week, our Trust set up this much-needed Mental Health Emergency Department, which will support and care for those people in our community who are most in need of our specialist mental health care.

"Our staff are working with great dedication and commitment throughout this pandemic to ensure our community's mental health is safe, and this pioneering service is one of the ways we are doing this."

Cllr Piers Allen of the Adult Social Services, Health and Housing Committee for Richmond Council welcomed the new service, adding:

"Coronavirus is putting a strain on the mental wellbeing, as well as the physical wellbeing, of our whole country. Some people need specialist help and support to help them to deal with the pressure of isolation, illness or in some case bereavement.

"These new emergency mental health departments are an innovative response to dealing with this challenging situation. These vital services will reduce some of the pressure on hospital A&E departments, whilst ensuring that people with mental health needs are receiving the specialist support they need.

"I welcome these new units and we will support both South London and Maudsley NHS Foundation Trust and South West London and St. George's Mental Health NHS Trust to ensure they have access to the resources they need from the local authority."

This service will care for patients in Richmond, Wandsworth, Merton, Kingston and Sutton.

Those who need support should call the Trust's mental health support line on **0800 028 8000**.

Organisations who can refer patients to these services include acute A&Es, police, London Ambulance Service and NHS 111.

A screening process must take place before patients are referred to the service, to ensure any physical health problems do not require urgent medical attention. Therefore, these services do not operate on a walk-in basis but take referrals through the mental health support line and through the organisations listed above.



Gail Francis-Tiron Art

View Gail's work at www.gailfrancistiron.com and on Facebook [@gailfrancistironart](https://www.facebook.com/gailfrancistironart)

The following are three individual large paintings based on the Japanese style of birds on cherry blossom branches, obviously these have my special twist. They are called Cherry Blossom, 1,2 and 3



Gibraltar Alive: A scenic view of the Rock

92 pages of full colour photos of Gibraltar. See the Rock as you've never seen it before! Only £10

Available to collect from Crusader Travel
or contact@TwickenhamAlive.com



Gibraltar Alive
A scenic view of the Rock

COVID-19

By Teresa Read

The Search for A Vaccine

This week saw human trials beginning for a government supported vaccine at Oxford University and Imperial College London.

<https://www.imperial.ac.uk/news/197023/imperial-begin-trials-oxford-covid19-vaccine/>

However, the World Health Organization Director-General Dr Tedros cautioned that “we have a long way to go. This virus will be with us for a long time” ... “the world cannot go back to the way things were. There must be a “new normal” – a world that is healthier, safer and better prepared”.

Global Cooperation

The World Health Organization and national and global partners are launching a landmark collaboration to accelerate development, production and deployment of safe and effective technologies to prevent, diagnose and treat COVID-19 - making them accessible to everyone who needs them, worldwide.

Treatment options under study – Solidarity Trial

Based on evidence from laboratory, animal and clinical studies, the following treatment options were selected: Remdesivir; Lopinavir/Ritonavir; Lopinavir/Ritonavir with Interferon beta-1a; and Chloroquine or Hydroxychloroquine.

Remdesivir was previously tested as an Ebola treatment. It has generated promising results in animal studies for Middle East Respiratory Syndrome (MERS-CoV) and severe acute respiratory syndrome (SARS), which are also caused by coronaviruses, suggesting it may have some effect in patients with COVID-19.

Lopinavir/Ritonavir is a licensed treatment for HIV. Evidence for COVID-19, MERS and SARS is yet to show it can improve clinical outcomes or prevent infection. This trial aims to identify and confirm any benefit for COVID-19 patients. While there are indications from laboratory experiments that this combination may be effective against COVID-19, studies done so far in

COVID-19 patients have been inconclusive.

Interferon beta-1a is used to treat multiple sclerosis.

Chloroquine and **hydroxychloroquine** are very closely related and used to treat malaria and rheumatology conditions respectively. In China and France, small studies provided some indications of possible benefit of chloroquine phosphate against pneumonia caused by COVID-19 but need confirmation through randomized trials.

Local Statistics

The In Your Area website gave the following statistics for COVID-19 on Friday 24 April: 349 confirmed cases in Richmond upon Thames, 411 in Kingston-upon-Thames, 613 in Hounslow, 988 in Ealing, 621 in Merton and 524 in Hammersmith and Fulham. Updates are also available from the BBC on their Coronavirus UK Map.

Number of Deaths from WHO Situation Reports:

At the time of writing the World Health Organization Situation Report for Friday 24 April 2020 gave the following details for countries with high death rates - the figures in brackets were last week's figures: deaths in the USA 42,311 (28,221), 25,549 in Italy (22,172), 22,157 in Spain (19,130), 21,823 in France (17,889), 18,738 in the UK (13,729), and a total of deaths worldwide 181,925 (139,378).

People of all ages can be infected by the new coronavirus (nCoV-2019).

Older people, and people with pre-existing medical conditions (such as asthma, diabetes, heart disease) appear to be more vulnerable to becoming severely ill with the virus.

WHO advise people of all age to take steps to protect themselves from the virus, for example by following good hand hygiene and good respiratory hygiene.

Does the new coronavirus affect older people, or are younger people also susceptible?



#Coronavirus

York House lit up to support NHS and carers during coronavirus outbreak

Richmond Council showed its support for colleagues in the NHS, adult social care and the voluntary sector, by lighting up one of its buildings last night (Thursday, 23 April).

To coincide with a planned Clap for Carers event, where people across the nation simultaneously stand on their doorsteps and applaud to show their support for the health and care service, York House in Twickenham was lit up in blue – the colour of the NHS.

Cllr Gareth Roberts, Leader of Richmond Council, said this was one small way the Council could show its support.

“The strength and resolve of our borough at the moment is incredible. Those working in the NHS, social care and in the voluntary sector are doing amazing work, day-in day-out. It is important we demonstrate our support.

“I have seen so many videos and photographs on social media of people coming out and clapping, right across the borough, and I am glad our residents are joining in with this national show of appreciation for our health and care workers.”



Live music show Rockin' the Lockin' this Saturday!

For one night only, local musicians will come together to host a live music show from their homes in aid of Crossroads Care Richmond and Kingston upon Thames.

The show will be live on Facebook on Saturday 25 April from 5–10pm. Simply go to <https://www.facebook.com/rockinthelockin/> to rock along with the fifteen musicians who will make it a virtual night to remember! Visit the Facebook page to find out the Rockin' the Lockin' line up.

Crossroads Care Richmond and Kingston upon Thames has joined forces with musicians so that it can continue its mission of supporting the most vulnerable during COVID-19. The organisation provides support to unpaid carers and the people they care for. In response to the pandemic, the charity has set up a food bank and completed over 1,000 requested trips to supermarkets, hospitals, homes and pharmacies.

It is hoped that the concert will help raise spirits in the community and raise funds for the charity via its [JustGiving page](#).

CLLr Nancy Baldwin, Mayor of Richmond upon Thames, said:
“Kick back, relax and enjoy a night of listening to fabulously talented local musicians whilst supporting a brilliant local charity.

“It’s an opportunity to come together as a community virtually whilst we stay home to save lives. Please help raise awareness of the event and tell your friends and family about it.”

Julie Da Costa, CEO of Crossroads Care Richmond and Kingston upon Thames, added:

“Funds raised from Rockin’ The Lockin will assist us in our mission to continue supporting those affected by the COVID-19 outbreak.

“As regulated providers and a registered charity, our organisation reacted quickly to COVID-19, working with our voluntary and statutory partners, neighbourhood groups and local traders to meet the needs of our local community.

“We regulated over 35 Key Volunteers who, over the past four weeks, have worked extremely hard to meet the needs of those who are vulnerable. We also recently started delivering pub-cooked foods (produced by The Anglers, Teddington) for those financially affected by COVID-19; those at risk and vulnerable; the elderly, as well as children and adults with additional needs.

“Our response would not have been possible without the drive and passion of our core staff, together with our new service arm, our COVID-19 Regulated Key Volunteers. I am proud to be CEO of such an incredible charity where the commitment and passion of its people continues to amaze me.”

“I would also like to give a social thanks to Teddington Together for organising the event.”

View more information on [Crossroads Care Richmond and Kingston upon Thames](#).

ROCKIN' THE LOCKIN!
IN SUPPORT OF **CROSSROADS CARE**
Richmond & Kingston upon Thames





An easy River Crane walk from Kneller Gardens to Mill Road with a look in at the Green Gym Orchard, now in bloom, will be uplifting and here are some photos for those who cannot get out at present. We have put more photos and birdsong on the Flickr album and we are trying to learn all the different bird tunes which has been good fun although challenging. It seems so much quieter without the aircraft and traffic noise and little chatter. The Conservation Volunteers - TCV, which Green Gyms belong too, has done a lot of work along this stretch of the river and we are all reaping the benefits of the wonderful flora and fauna which has flourished from their care and dedication. They will be looking for volunteers to keep up this work for local nature when gatherings are allowed again so maybe that will be a new interest to pursue. Links are on our [Ecology page](#) for local and national groups.

*“In beauty may I walk; All day long may I walk; Through the returning seasons may I walk
With beauty before me may I walk. With beauty behind me may I walk
With beauty above me may I walk. With beauty all around me, may I walk.”*

Navajo Chant -abridged

42% increase in recycling puts pressure on service

Additional vehicles and crew rounds have been put in place to respond to the huge increase in household recycling since the lockdown began. Since the end of March, household recycling has increased by a third in the borough, from an expected collection of 33 tonnes to almost 47 tonnes every day. With more homes ordering items online and eating at home, blue and black boxes are regularly overflowing with more card, paper, cans and bottles.

The additional tonnage has put pressure on the service – causing vehicles to regularly fill up early and in a small number of places, crews are unable to complete their routes.

Therefore, from today, Richmond Council has agreed with our new provider Serco to put on more crews and vehicles. Residents are asked for their patience over the next few weeks. The Council is committed to maintaining the service, however with more waste being discarded than at Christmas, there may continue to be disruptions. Any collections missed will be collected, but possibly not on the scheduled day.

The Council has launched a campaign to help support households manage their waste and recycling, with [ideas around using food and composting](#).

Chair of the Environment and Sustainability Committee, Cllr Martin Elengorn, said:

“The COVID-19 pandemic has changed our daily lives and caused significant disruption. This looks set to continue for some time, but this disruption is absolutely necessary if, together, we are to limit the spread and impact of this disease. We are working hard to ensure that your bins are still collected in the coming weeks and months. We have added additional capacity within the service. But we need your help. On average over the past few weeks, each household has gone from producing 1.95 kg to 2.75 kg each week in recycling. These are unique circumstances and I am sure everyone agrees that we all need to work together to get through it. We are asking residents to really look at what they can do to reduce the amount that they are throwing away and at the same time please be understanding if your collection isn’t picked up on your scheduled day.”



Residents are reminded:

- Leave waste and recycling ready for collection from 8pm the night before and no later than 6am on your [collection day](#).
- Leave waste and recycling within the front boundary of your property i.e. where your front path or drive meets the road or pavement. If you have sufficient outside space, you may choose to store and present your black bag within a dustbin.
- Please separate food waste and close the food caddy securely
- Avoid big clear-outs which create more rubbish and recycling for crews to collect. Please hold onto larger items like furniture or mattresses until the outbreak has subsided and do not dispose of any type of waste on a bonfire as the smoke causes air pollution and can have negative health effects for people living nearby.
- If you're self-isolating and feeling ill, putting any potentially infected items like used tissues or cleaning cloths into separate plastic bags and double bagging them. These bags should then be put aside for at least 72 hours before they are put in external bins. If using a street litter bin, please make sure tissues are securely bagged up.
- [Try to minimise the amount of rubbish, recycling and food waste you produce.](#)
- Don't take any waste or recycling to Townmead Road recycling centre in Kew. This centre is closed.
- Continue to wash your hands regularly, maintaining good hygiene when handling your rubbish and recycling and keeping your distance when the workers are doing their collections.
- Check carefully about what [can and can't be recycled](#) in your collections.
- Regularly check the [council's website](#) or social media channels like [Twitter](#) and [Facebook](#) for updates on waste and recycling collections.

Twickenham coronavirus regional testing centre to open for key workers

A drive-through coronavirus testing facility is to open at Twickenham Stadium as part of the Government's UK-wide drive to increase testing for thousands more NHS and other key workers.

The site sits alongside a rapidly expanding network of testing sites being set up around the UK, and is operating on an appointment-only basis for NHS staff and other key workers. The facility will be piloted for its first few days of operation.

This follows the launch of the Government's partnership with universities, research institutes and companies to begin rollout of the network of new labs and field testing sites across the UK, with 32 testing sites opened to date.

This network will provide thousands more PCR swab tests - which are used to identify if you currently have the virus - for critical key workers, starting with NHS front line staff. This means those who test negative for coronavirus can return to work as soon as possible, and those who test positive are able to recover.

RFU CEO, Bill Sweeney, said:

"The RFU is pleased to be able to support the COVID-19 drive-through testing programme at Twickenham Stadium for NHS and other key workers.

"We receive tremendous support from frontline services during match days at Twickenham and we are grateful for the opportunity to be able to support key workers during this severe national crisis with the use of our site and staff to support operationally."



Health Minister Lord Bethell said:

"The Government is rapidly scaling up the national effort to boost testing capacity for coronavirus to protect the vulnerable, support our NHS, and ultimately save lives.

"This new service will help end the uncertainty of whether NHS and social care staff and other key workers need to stay at home, meaning those who test negative will be able to return to work.

"This is a national effort and we are proud to be working with a number of partners to turn this ambition into a reality and roll out additional capacity to where it is needed."

Professor John Newton, National Coordinator for the UK Coronavirus Testing Strategy, said:

"New testing sites such as this one are a key pillar of our 5-pillar plan to scale up testing, and are critical in supporting NHS staff and other frontline workers who are isolating at home to return safely to work if the test is negative."

"This is a brilliant example of industries and businesses turning their resources to creating and rolling out mass testing at scale, which will help to deliver on our aim of carrying out 100,000 tests a day across the UK by the end of the month."

The Government is also urgently working on setting up a home-testing service for critical key workers, supported by Amazon's logistics network and other commercial partners.

Nana Prempeh, Area Manager for Boots in Southwest London, said:

"We feel incredibly proud to be supporting COVID-19 testing for NHS workers in Twickenham.

"Boots has been at the heart of UK healthcare for 171 years and has always come forward to support the community in times of need. Our team in Twickenham is no exception. Some of our colleagues have already stepped forward to volunteer to run this COVID-19 testing station, which will start testing its first critical workers today."

Not a lot of people know this!

By Sue Hamilton-Miller

With America now suspending immigration green cards, I thought that this might be the time to tell you about the important historical link that the residents of Richmond House had with the United States back in the eighteenth century. But first of all a bit of complicated background information about the families concerned.

Edward Birkhead, the first owner of Richmond House, married a lady called Ellen Middleton. She was the sister of "Henry Middleton of Twickenham" as he was known. Henry had several children but the ones that concern us are his daughter Mary and two of his sons, Edward and Arthur. Mary married Edward Birkhead's nephew William, and William and Mary inherited Richmond House. They in turn left the house to their daughter, also Ellen, who married a wealthy draper and land owner called John Izard. (see later). The Middletons, Birkheads and Izards all continue to intermarry and play a part in the later story.

The 3 families were also Puritans and Quakers, attending St Margaret's Church, Westminster, instead of Westminster Abbey which they found too High Church. It is known that George Fox, the Founder of the Quakers, attended a meeting in Richmond House where he noted in his diary in 1658 "*had a meeting at Serjeant Birkhead's at Twickenham, to which many people came, some of considerable quality. A glorious meeting it was*". It is a shame that he didn't record the names of the people who attended.

The Puritans sought to purify the Church of England of Roman Catholic practices and many of them had already settled in America. This may be why Edward and Arthur Middleton sought a new life in South Carolina in 1678, at a time when their sister Mary was still in Richmond House. In the "Warrants for Land in South Carolina" it is stated:

*" You are to admeasure and lay out for **Edwd Middleton & Arthur Middleton, Gent., Seventeen Hundred & Eighty Acres of land in some place not yet layd out, or marked to be layd out, for any other person or use, and if the same happen upon any navigable river, or capable of being made navigable, you are to allow only the 5th part of the depth by the water side, and a Certificate specifying the bounds and Scituation thereof, your are to returne to us, with all convenient speed, and for your doing this shall be your sufficient Warrant dated ye 7th day of Sept. 1678.**"*

Edward and Arthur built on the banks of the Ashley River in South Carolina a plantation called The Oaks where, dependent on slave labour, they cultivated mostly rice. The Oaks passed to Edward's son Arthur and by 1720, the estate consisted of over 5,000 acres and Arthur Middleton owned over 100 slaves. The area was already populated by wealthy English people who set up large plantations dependent on slave labour, for the cultivation of cotton, rice, and indigo, but it is interesting to learn that all the Middletons returned to England for their education.

Arthur's son, Henry, in turn became one of the largest landowners in the colony of South Carolina, owning 50,000 acres and about 800 slaves, and, through his wife Mary, inherited Middleton Place which is now called the Middleton Plantation, a National Historic Landmark District set in the oldest landscaped gardens in the United States. It was in Middleton Place that Henry's son Arthur was born. And it was this Arthur Middleton (our original Henry's great-great grandson) who is a signatory of the American Declaration of Independence. And his wife's name – Mary Izard! The intermarriages in America are too complicated to explain here! Arthur died in his Grandfather's house, The Oaks, but his body, as well as Mary's, is buried in Middleton Place which is open to the public.

There is a thriving Middleton family history society who meet for reunions every year, and they have been in touch to see if I can help with finding out more about Henry Middleton's house in Twickenham, as he is described in many documents as "Henry Middleton of Twickenham". Sadly to date I have been unable to help them. If any of you can help they would be most grateful. They are also struggling to identify which part of the country the Middletons came from. Henry's parents were Richard Middleton and Katherine Herne but we can't with complete confidence go further back than that in the family tree.



Arthur Middleton from a 1771 portrait of the Middleton Family by Benjamin West

Gordon Beningfield and the butterflies that he painted and designed for a set of postage stamps

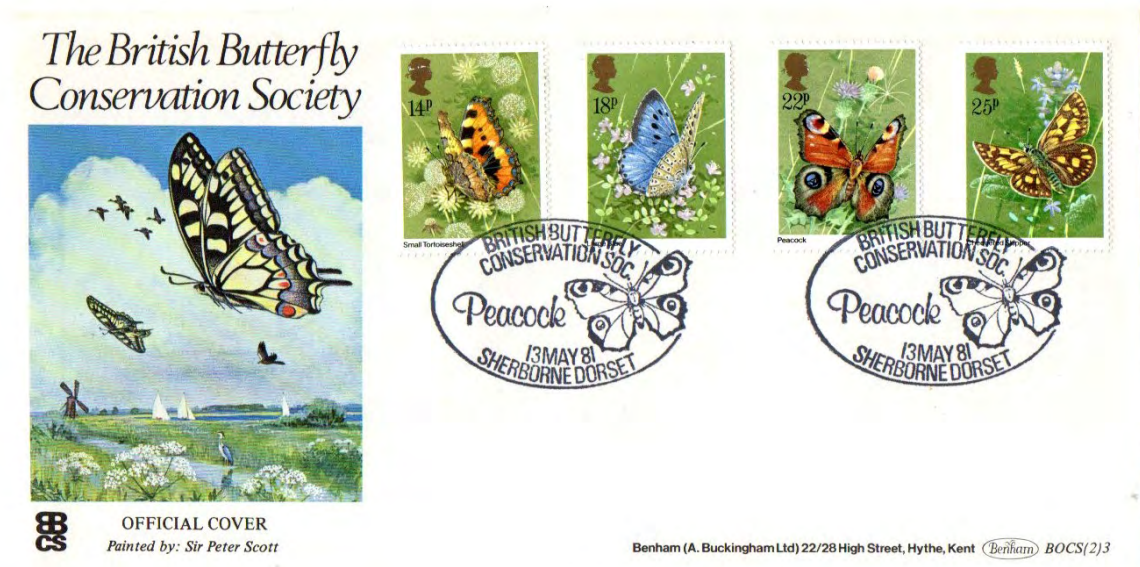
Following on from last weeks Crane River Sanctuary column. Attached are 2 First Days Covers from my collection.

They show all four of the set of stamps originally painted and designed by Gordon Beningfield. He was an excellent wildlife artist in his time who specialised in Butterflies.

These stamps were issued by the Royal Mail on 13th May 1981 and became a very popular issue.

You will see the Peacock and the Small Tortoiseshell in Crane Park and in other parks and gardens within the Tribune's area. The Large Blue is being re-introduced in the West Country following its extinction in the UK during the 1950s. The Chequered Skipper is one of our butterflies that is under pressure as its habitat gets lost to agriculture and buildings.

To find out more, (or better still join up) see www.butterflyconservation.co.uk



Wildlife charity, Butterfly Conservation, launches plea to public to help measure impacts of climate change while its scientists are in lockdown.

Leading wildlife charity, Butterfly Conservation, known for its sector-leading butterfly and moth population data going back over 50 years, has launched a plea to the public to help contribute to assessing the effects of climate change while its scientists and volunteers are unable to carry out monitoring of wildlife sites during the lockdown.

A vital indicator of the effects of climate change in the UK, butterfly phenology (the study of the timing of natural events) recording is going to be severely affected this spring due to the restrictions on movement to halt the spread of coronavirus. And the charity is calling for anyone at home with an outdoor space to help.

Richard Fox, Associate Director Recording and Research said: *'studying the changing flight times and locations of butterfly species across the UK is vital to understanding the impacts of climate change on our native wildlife. This spring we are going to have a gap in our phenology data as our scientists and volunteers are not able to carry out their usual monitoring at nature reserves and across the UK countryside. So, we are asking the general public to please help us out. This is something you can do for science and climate change in your own back garden. We know that climate change is making butterflies emerge earlier in spring and some are spreading to new parts of the UK. We need you to tell us where and when you saw them.'*



Two new studies by the University of York, in collaboration with Butterfly Conservation and other partners have shed some light on how butterflies and moths are responding to climate change, but there are still many unanswered questions and trends are continuing to change.

As the climate has warmed, butterflies have tended to fly earlier in the year and, in some cases, produce more generations each year, but it's not yet clear how these changes will affect their fortunes in the long term. Recent research suggests that an earlier start benefits some species but is detrimental for others.

Richard continues: *'Keep a look out in your garden for butterflies such as the Brimstone, Comma, Speckled Wood, Holly Blue and Orange-tip. We want your records, and to know when you saw them on the wing. 'If you live in certain areas, particularly in northern England and in Scotland, we're particularly interested in your observations as all of these butterflies are spreading northwards, colonising areas where they didn't occur previously. The Comma, for example, has spread hundreds of miles northwards since the 1970s. Just this week we received a sighting from a garden in Fife which was the first Comma that the volunteer had seen there in 60 years. Monitoring the changing distributions of butterflies is important to understanding the effects of climate change on our environment. We know that for some species climate change has helped to boost numbers, while for others it has had an adverse effect, but there's still so much to learn. You never know what you might see. There has even been a scattering of Painted Lady butterfly sightings across the country in the last week. This species is a migrant from warmer parts of Europe, which normally arrives at the end of May or early June. We can't gather data in our usual ways this spring, so we need the help of everyone who is at home, with a garden or outdoor space, during the lockdown period. Each recording is important for our work to conserve UK butterflies and we would love the public to get behind us.'*

To submit a recording, simply go to www.butterfly-conservation.org/mysightings.



**Butterfly
Conservation**

Saving butterflies, moths and our environment

Marble Hill Horticultural Marvels

By Rena Butterwick

Our garden volunteer Rena Butterwick has been doing a little research on the Rosa Arvensis which is being planted in the woodland quarters. We hope you enjoy her findings. The planting has been sourced to support for the ecology of the site to provide shelter or attract birds bees, butterflies and which will in turn support the badgers, bats on site.

ROSA ARVENISIS

Noted by botanist William Hudson, in 1762, as a field rose.

This is a perennial, rambling shrub found in Europe and Turkey. In England, it resides mainly amongst the hedgerows of the South and Midlands. As a woodland species, it is tolerant of shade and can reach a height and spread of six metres.



The reddish, purple, arching stems have hooked spines that enable it to grip tightly on to stronger and more stable flora. Lush green pinnate leaves have between 5-7 toothed leaflets. Flowers, each with 5 white petals and exquisite golden stamens are prevalent in mid summer. These are followed by more rounded red hips.

These hips, containing vitamin C, attract a wide variety of wildlife and are an invaluable source of nourishment for insects, birds and mammals.

Culturally significant, it was referred to as a 'sweet musk-rose(s)' in Shakespeare's "A Midsummer Night's Dream" at the moment Oberon tells Puck where to find the sleeping Titania.

If you would like to learn more about the project visit:

www.english-heritage.org.uk/visit/places/marble-hill-house



ENGLISH
HERITAGE

Wilson supports small limited companies and creative industries

Munira Wilson, MP for Twickenham, has backed a parliamentary motion in support of small limited companies during the COVID-19 pandemic. The motion calls on the Government to: “close the loophole in the job retention schemes by allowing small limited company directors to claim for 80 per cent of filed average earnings, including dividends.”

Munira supported the motion after several constituents affected by the loophole contacted her as their local MP.

Following her support of the motion, Munira Wilson MP said:

“The creative industries have been hit hard by the Government’s failure to support freelancers and small companies in the job retention scheme.

“Despite media pressure on the Government and a public petition -that reached 300,000 signatures- in recent weeks, it has still not acted.

“I have supported the motion to add pressure to the Government to ensure my constituents working in the creative industries are not left behind.

“Twickenham has a vibrant creative industries sector and I will continue to press the Chancellor to make the necessary changes to support it”

Closure of Richmond Footbridge to secure social distancing

There will be no public access to the footbridge at Richmond Lock and Weir from 21 April, as part of continuing efforts to combat the coronavirus, the Port of London Authority (PLA) has announced.

The measure follows a lack of adherence by a minority of the bridge’s users to a one-way system, introduced at Easter, which the PLA had hoped would enable the structure to remain open to pedestrians and cyclists.

Mark Towns, the PLA’s harbour master for the upper tidal Thames, said: *“Though the vast majority of people have respected the one-way system, a minority has sadly paid no attention. This unfortunately leaves us with no other option but to close the footbridge until further notice.*

“I’d like to thank all those who complied with the one-way system. But without the closure, there remains a simply too high a risk of COVID-19 spreading, due to users meeting halfway across not being able stay safely two metres apart, as a result of the bridge’s narrow structure.

“We will lift the restrictions as soon as we can, line with Government guidance.”



AND SO IT CONTINUES...

Well folks, it looks like this lockdown is going to continue for the foreseeable future now. I think we will just have to accept that life has changed, and try to get on with the situation, grim as that may seem.



What new pastimes have you taken up (or revived) since lockdown? I've been trying to make sourdough bread, but with mixed results as you can see here. So much so that my husband has tracked down some dried yeast on the internet so that he can start using our bread maker again! Yeast seems to be out of stock



everywhere, but as I have just managed to get some strong bread flour, perhaps the next loaf will be better. They have all tasted good actually, but are very dense!

But onto the real, professional baking: Home delivery services are springing up all the time as companies adapt their modus operandi to survive these new restrictions. One example of this is a fabulous bakery based in Surbiton that hitherto has supplied the top London hotels and restaurants rather than the public. Well, you'll be pleased to hear that [Frankonia](#) is now doing home deliveries and our Twickenham area is included, so now's the time to dig out those elasticated waist trousers and treat yourselves to some really top-notch produce from around £20 a box. There's a list of delivery postcodes on the website. You can always share a delivery with a neighbour! As they say, 'You're worth it!'



Of course quite a few of our shops are still open, and trading within the social distancing guidelines. Paul Cooper the greengrocer, Brown's Artisan Butchers, Sandys here in Twickers to name a few, and lots more in our area. And if you can't visit them personally, many will take a phone or email order for collection or home delivery. We are very lucky to have so many lovely, independent retailers and we must remember to continue to support them when we get back to 'normal' whenever - and whatever - that ends up being!

At home we've been busy planting seeds, and luckily the rocket from last year seems to have shot up recently (pardon the pun - actually it's Paul Cooper's line!). We invested in some cold

frames to bring on the seedlings, as we don't have a greenhouse. These cold frames are inexpensive and companies like Thompson & Morgan are offering some excellent deals, often including vegetable seeds too, so do check them out. Local garden centres and shops such as Percy Chapman here in Twickenham will deliver heavy items like compost, so if you are housebound all is not lost! And do remember to share your spare seedlings with friends and neighbours locally. Our road has a really supportive facebook group and I know other roads have WhatsApp and similar ways of communicating among themselves.

Did you know that the **British Radish** season starts in April, making radish the first open field salad veg of the British growing year? They are in the shops and at the farmers' market now. I love radishes, and hopefully we will soon be harvested some of our own from the garden, but I thought you might like to try this delicious recipe from [Love Radish](#). And of course you can always incorporate a radish or two into coleslaw or any salad for that matter, and they will add their unique peppery element. I often just eat radishes the French way – with some butter and salt, or made into a sandwich filling.

And with the weather improving here's a lovely, easy, salad recipe from the Love Radish website, where you can find lots more to inspire you!

XANTHE CLAY'S RADISH AND PEA SALAD

Serves 2 – 3

Preparation Time: 10 mins

- 1 teacupful of fresh peas
- 10 radishes, thinly sliced
- 1 spring onion, thinly sliced
- 3 tbsp crème fraiche
- milk
- A punnet of cress
- black pepper

1. Lightly cook the peas in boiling water, then drain and cool under the tap.
2. Scatter them over a plate with the thinly sliced radishes and spring onion.
3. Thin the crème fraiche to single cream consistency with a little milk and trickle it over the salad.
4. Snip over the cress and season with freshly ground black pepper and serve.



Follow Alison on insta: [@theseasonedgastronome](#)

Twickenham Says Thank You

As you can see on our front cover, Ken Maguire and his family have filled the windows at The Prince Albert pub



next to Twickenham Green with rainbows, honouring the NHS and other key workers



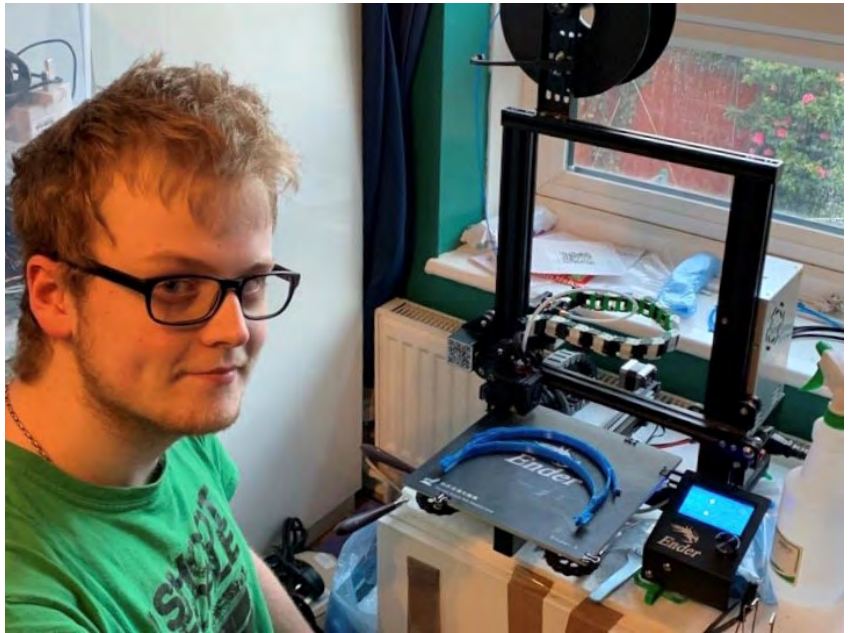
Next door to the pub, those fine people at Meet and Deep newsagent woke up on Monday morning to find a wonderful gesture from a local resident adorning the lamp post opposite. Meet & Deep are well known as an integral part of the local community, particularly known for their community support and spirit at Christmas.

<https://www.facebook.com/meetanddeep/>

Richmond upon Thames College student prints 3D PPE for NHS

Students and staff of Richmond upon Thames College (RuTC) have been teaching and learning remotely during the COVID-19 pandemic and RuTC uses all the latest software to deliver the best possible learning experience. However, some students go the extra mile and use their spare time to help the local community and the NHS.

Ben Grace, Engineering Level 2 student at RuTC, has been producing personal protective equipment (PPE) parts with his 3D printer at home to support key workers at the frontline. In a social media post he shared his amazing work and encouraged everyone to give as much support as they can. He said, "I signed up to 3DCROWD.UK initially to use my 3D printer to help this amazing cause. I have been helping out for over two weeks now volunteering my spare time and have now become one of the local coordinators for West London, organising local hubs where makers like myself can send our printed parts to be assembled and given to the people in the frontline."



Ben Grace, Engineering Level 2 student at RuTC

3DCrowd UK was one of the first who responded to the PPE shortage and has grown from a handful of people to over 6,000 volunteers who use their own 3D printers to produce face shields. 39,000 face shields will be delivered to key workers at the COVID-19 frontline in the upcoming weeks, with the production of more parts continuing.

Simon Walker, Construction Crafts teacher at RuTC, said, "As Ben's teacher I am immensely proud of his achievements. If there were just two things I would want for my students it would be curiosity and confidence. This project and his attitude towards it have given Ben both in heaps. Ben has also gained valuable experience for his course. Gaining first-hand knowledge of material selection, the design and manufacturing processes and assessing quality control. In tutor groups, we discuss emotional intelligence, feelings, sense of purpose, behaviour and how they are all interrelated. This has shown us that in any given moment we all have the ability to choose how we feel and behave. Well done to Ben and the NHS."

Even though RuTC's new college campus is currently closed, prospective students can still apply online for a course to join the college in September 2020 at www.rutc.ac.uk/courses.



**Richmond upon
Thames College**

St Mary's University Update

New Vice-Chancellor Joins St Mary's

New Vice-Chancellor Anthony McClaran has this week joined St Mary's University, Twickenham.



Anthony joins St Mary's from the Australian Tertiary Education Quality and Standards Agency (TEQSA) where he has served as Chief Executive since 2015. Prior to moving to Australia, he was Chief Executive of the UK Quality Assurance Agency for Higher Education (QAA) and Chief Executive of UCAS. He has held senior roles at the University of Hull and the University of Gloucestershire. Anthony said of joining St Mary's, "I am honoured to be joining the University today. St Mary's drew me back to the UK because of its reputation as a values-driven university, firmly rooted in its Catholic foundation and committed, for 170 years, to delivering outstanding education. I look forward to the day soon when the St Mary's community can all return to campus and life can return to

normal.

"I would like to thank former Vice-Chancellor Prof Francis Campbell and Interim Vice-Chancellor Dave Hartnett for all they have done, especially in light of the Coronavirus (COVID-19) pandemic, and I look forward to leading St Mary's on the next steps of its journey."

Speaking at the time of Anthony's appointment, Chair of the University Board of Governors Bishop Richard Moth said, "We're delighted to welcome Anthony to St Mary's. He brings a wealth of experience of the UK and international higher education sectors which will benefit the University greatly. Anthony will help lead the university to its next stage of development, following the historic achievements under Francis Campbell's tenure as Vice-Chancellor."

St Mary's University recently achieved its highest ever position in all three of the UK-based university league tables. St Mary's has been rated as the top university in London for student satisfaction. It hosts the only faculties in the UK with the ability to offer ecclesiastical degrees, the Mater Ecclesiae College, and its long-standing Education program was recently re-confirmed as Ofsted 'Outstanding'. St Mary's is at the cutting edge of new educational developments, including accelerated degrees in technical theatre and liberal arts, and unique study abroad opportunities.



St Mary's
University
Twickenham
London



Shakespeare's Lockdown Birthday

As the sun warms a hot spring day, we can escape the shackles of pestilence, at least within in our own mind, to enjoy this most English of days, St George's Day. In the English mind of course, 23rd April is also the day we celebrate supernal Shakespeare, born 456 years ago this day. Well ... he was christened three days later, but in 1564 baptism was an urgent matter; the plague killed a quarter of Stratford-upon-Avon's population that year. Now, as the plague is all too real, we are can sympathise with those times.

So Shakespeare knew the frustrations of lockdown. A widespread contagion in 1592-93 closed London's theatres, potentially disastrous for a playwright. However, he had a quite lucrative side-line in love poetry and his early sonnets were written during this time. During the first two decades of the seventeen century, theatres closures totalled 78 months. Lockdown in 1606 produced the later sonnets and the texts of *King Lear*, *Antony and Cleopatra* and *Macbeth*. So, lockdown can be beneficial!

Noting that Shakespeare's longest lockdown lasted 25 months, I have taken a look at Mark Aspen Reviews, wondering how many over the same period of time have mentioned Shakespeare. Staggeringly there are 52!

A year ago, Benedick's "giddy thing" [Much Ado about Nothing](#) at The Rose, set in a five-star hotel in Scilly, involved both the Mafiosi and a mad cow; whereas RSS set its open-air production to the [background of the suffragette movement](#). Shakespeare is nothing if not versatile.

The Winter's Tale's green-eyed monster emerged three times. TTC's [Regency setting](#), with its "genuinely tormented" Leontes, contrasted with [Helikon's](#) OSO production, which foreshadowed events twelve months on, Hermione's adultery trial taking place by video conference.



Nowadays when innovative directors make Shakespeare malleable, there were examples of bending it without breaking it. RSS's [Hamlet](#) cross-casted, well just about everybody, while YAT's [Romeo and Juliet](#) had the Capulets running a car repairers.

For some unfathomable reason, *Midsummer Night's Dream* seems to be put on even before spring comes. Katie Abbott's thematically overextended adaptation, [Dream](#), produced by the RSS Young Actors was "a visual delight" with its teenage cast "giving their all", while ENO's of [Benjamin Britten's "feast for the eyes"](#) gave an "otherworldly and magical" operatic experience.

Of course opera does add another dimension to Shakespeare, a point thoroughly understood by an octogenarian Giuseppe Verdi when writing *Falstaff*, his long awaited comic opera based on *The Merry Wives of Windsor*. The Grange Festival's "priceless production" was "blustering, big, boisterous and brilliant". Of all the Shakespeare interpretations of the last two years, *Falstaff* was a winner. Mark Aspen's verdict was "If you only go to one country-house opera this summer, this must be it!"

Sadly, this year there is to be no Grange Festival, no Shakespeare, no live theatre, and even if we see a friend we must, to quote from *Macbeth* "advise him to a caution, to hold what distance his wisdom can provide". However, if in our mind's eye we see William Shakespeare in these pestilent times, we can, from our two-metre social distance, sing "Happy Birthday!" The Bard will understand.

Read Thomas Forsythe's retrospective at www.markaspen.com/2020/04/23/shakes-lockdown

Photography by Mark Douet, Simone Best, Sarah J. Carter, Sally Tunbill, Jojo Leppink, Tom Shore, Robert Workman and Clive Barda



ROH announces the next in its series of broadcasts for the culturally curious at home

Join the Royal Opera House as we continue our packed schedule of free online broadcasts, musical masterclasses and cultural highlights with a suite of new content that audiences can access for free anywhere, anytime.

We are delighted to announce the next in our series of **free weekly production broadcasts** with a Facebook and YouTube premiere of The Royal Ballet's *The Winter's Tale* from 7pm BST on Friday 1 May, and The Royal Opera's performance of Richard Eyre's *La traviata*, which celebrated its 25th anniversary this year, from 7pm on Friday 8 May starring Renée Fleming and Joseph Calleja.

On Monday we will give audiences the opportunity to get under the skin of our art forms by handing the reins of the ROH Instagram account to former Royal Ballet Principal **Zenaida Yanowsky**, who performed with the company for over 23 years, and who will answer all of your questions via **Instagram Stories**.

We also look forward to the next episode of **House Music**, featuring the Music Director of The Royal Opera, **Antonio Pappano**, as he plays and discusses some of his favourite pieces from the opera repertory.

Last week, the Royal Opera House launched [Create & Learn](#), a virtual classroom of **free home-learning opportunities** for children and young people to encourage their creativity. This week we are delighted to announce Royal Ballet Principal, **Lauren Cuthbertson**, will launch this week's challenge inspired by the ballet *Alice's Adventures in Wonderland*, which in turn is inspired by Lewis Carroll's famous novel. Anyone can get involved in the activities between now and 17 July, with new activities and courses added every Friday.

The BBC will broadcast **Strauss's *Ariadne auf Naxos*** on **BBC Radio 3** as part of Opera on 3 on Saturday 25 April. This production was first broadcast in July 2014 as part of the Richard Strauss 150 celebration.

Romeo and Juliet: Beyond Words is currently available on **BBC iPlayer**. Produced with the BBC and featuring dancers of The Royal Ballet, the film stars some of the most exciting dancers of their generation, directed and produced by multiple award-winning **Michael Nunn** and **William Trevitt** of BalletBoyz, this ground-breaking interpretation fuses The Royal Ballet's heritage with BalletBoyz' signature style and Prokofiev's stirring score.

To join us for all broadcasts, creative adventures and unique content, follow [#OurHousetoYourHouse](#).

Upcoming free ROH broadcasts include: The Winter's Tale, The Royal Ballet, 2014 – 1 May, 7pm BST and La traviata, The Royal Opera, 2009 – 8 May, 7pm BST



Lauren Cuthbertson as Alice in Alice's Adventures in Wonderland. (c) Johan Persson, ROH, 2011.



ROYAL
OPERA
HOUSE

TRAVELLER'S TALES 70 - BIRDS!

Doug Goodman Visits the Lac du Der in the Champagne Region.

It was made clear to me by the two experts that we were not bird spotting but birding and that we were not bird spotters but birders. With that sorted we started to plan the following day's 5.30 am visit to the Lac du Der in the south of the Champagne region to watch the arrival of some very special birds. The lake forms the largest artificial expanse of water in Europe with an area of 48 square kilometers and 77 kilometers of shoreline on the border of Marne and Haute Marne in north east France. It's about 5 hours from London on the TGV via Paris and a 4 hour drive from the DFDS ferry from Calais.



Dawn at the Lake



Dawn Arrival of the Cranes



Cranes Feeding

Because the River Marne can sometimes be extraordinarily unpredictable, it was decided to build a reservoir dam called the Lac du Der, named after the many oak trees in the area – ‘der-vos’ meant “oak” in Celtic. This gigantic building project was completed in 1974 and gave rise to the vast lake. When the Marne is in flood, water is diverted into the lake and stored there. When the river is low, lake water is sent back into the Marne. By these actions Paris is protected from flood surges and the river level is maintained at a depth suitable for pleasure boats and commercial traffic all year round, whilst the level of water in the lake rises and falls accordingly. It is due to the low levels of water in the lake between autumn and early spring, allowing mud flats to appear in the centre, along with food to be found in the surrounding fields, that the Der is such an attractive resting ground for migrating birds.



Guide to the Lake



Lac du Der in Champagne Region



Church by the Lake

LEISURE

Three marinas, six beaches and 250 kilometers of signed paths make the area a great spot for walking, cycling and observing the migrating birds. Since 1978 the Lac du Der has been listed as one of France's most important sites for bird watching attracting specialists from all over the world. I am certainly not a specialist and to my discomfort the two experts with me could train their scopes on a distant bird and identify it before I could even see it. Migrating birds

taking a short break on the lake include Greylag, White Fronted and Bean Geese, White Tailed Eagles, Whooper and Berwick Swans, Golden Eyes and many more species. As dawn broke we found a lakeside spot to await the arrival of the birds travelling from their Nordic locations to winter destinations in North Africa, Portugal and Southern Spain. There was no certainty that they would arrive that day but as the sun came up our guide said 'get ready'. I think he had been advised in advance of their flight plan. Then, like a squadron of heavy bombers the first flock of cranes arrived making an incredible noise with their wings and cries. Cranes have large feet, long necks and a two meter wingspan. They look huge even at a few hundred meters away on the lake but when you observe them from a hide in the middle of the fields, where grain has been spread for their benefit, the sight is stunning. More V formations continued to swoop in and I was told that around 200,000 cranes can pass through the area during the migratory period. It had been an exciting experience and after two days I could identify about 10 different birds: over 250 species have been noted.



Wooden Church. St. John Baptiste



Departing Cranes



Enjoy a Glass of Champagne

LOCAL ATTRACTIONS

The Der Region is well known for its wooden framed buildings, in particular six churches offering four centuries of architectural history. The clayey soil and oak wood gave rise to a style of construction typical of the region. Oak is used for the timber frame. Cob, made from clay and straw, is put in the gaps and held in place by small boards and covered with lime mortar. Around 30 km from the Der, the vineyards to the north-east of Vitry-le-François are known as the 'Coteaux Vitryats'; this lesser known area of the champagne appellation has started opening its doors to visitors. Located between Châlons-en-Champagne, gateway to this corner of France, and the Lac Du Der, a visit to one of the local champagne producers here is an added bonus to nature lovers drawn by the wildlife and tranquillity of the lake. The Vitryat vineyard route winds its way for 60 km around hills, slopes and plains, joining up 19 small champagne villages around the town of Vitry. More information is available from www.lacduder.com and www.champagne-ardenne-tourism.co.uk

An interesting report in The Times this week said that 56 breeding pairs of cranes had been identified in the UK producing 26 chicks. In 1979 a few cranes settled in the Norfolk Broads after being hunted to extinction over 400 years ago.

WIZ Tales - Easter Island – Rapa Nui

Teresa Read

Easter is one of the important dates in the Christian calendar so we might wonder why Rapa Nui or Te pito o te henua with its giant Polynesian statues (moai) was christened “Easter Island” - it seems that it just happened to be seen by a European explorer one Easter Sunday.

Situated in the South East Pacific, Easter Island is part of Polynesia which covers over a thousand islands from Hawaii to New Zealand.



Hawaii



Tuvalu



Tonga



Tonga



Samoa



New Zealand

Easter Island <http://worldinfozone.com/features.php?section=EasterIsland>

New £100k Coronavirus Emergency Grant to help charities and groups during pandemic

Local charities, voluntary or community groups working hard to support residents impacted by COVID-19 are being encouraged to apply for grant funding to help them continue delivering vital support. This new £100k grant is aimed at organisations delivering local support to those affected by this public health emergency.

The Council has been working in close partnership with Richmond CVS, RUILS, Richmond AID and Age UK Richmond to co-ordinate the effort from thousands of volunteers and ensure that all those who need it receive support, from food deliveries to social care, with no-one left behind.

They have redesigned existing services and created new ones to continue supporting vulnerable residents during the lockdown. However, many voluntary organisations are facing new financial challenges through increased demand for their services.

The new Council fund will give these organisations, who are facing financial challenges, help to continue their work in responding directly to the pandemic, above and beyond their normal activities.

It can only be used to meet the costs of delivering services directly to residents of Richmond upon Thames in response to Covid-19. Types of costs could include, but are not limited to:

- Building organisations capacity e.g. additional staffing / volunteer costs / equipment, transport or training
- Building stronger communities e.g. initiatives to provide practical support to local people – especially the most vulnerable and isolated
- Improving health and wellbeing e.g. projects that promote the health and wellbeing (physical and mental) of local residents

The grant is in addition to a host of other available funding streams for local groups from regional and national funders.

If you need extra support in applying for funding, Richmond CVS can help.

Cllr Gareth Roberts, Leader of Richmond Council, said:

“The response to this crisis from local volunteer groups has been brilliant.

“All sorts of activities have sprung up, including volunteers starting food banks, providing book delivery services, cooking and delivering meals, helping with food and essentials shopping, collecting and delivering vital medication and offer listening services over the phone to keep morale up. To those groups and individuals, on behalf of the council I’d like to say Thank You.

“This fund has been set up to help groups carry on the essential work they’ve been doing and I’d urge groups to apply as soon as possible, so we can start making sure funds get to where they are needed most.”

For more information to apply go to: www.richmond.gov.uk/coronavirus_emergency_grant_fund

For information on other funding available go to: www.richmond.gov.uk/covid_19_support_fund

For help in applying for funding contact Richmond CVS www.Richmondcv.org.uk



FOOTBALL FOCUS

By James Dowden

BRENTFORD FC



Hereford clinch promotion at Griffin Park

Brentford 2 – 2 Hereford

26/4/08

Preview

As there is currently an absence of football the Tribune takes a look at retro matches that took place this week in Brentford's history. Today we take a look at a home encounter for Brentford at Griffin Park as they host Hereford in the 2007/08 League Two season. The Bees are marooned in 11th place – safe from relegation but not able to get into the play offs with two games of the season remaining. For the visitors however this is a vitally important game as they know a win will secure League One football for the following season. Defeat and the door may be opened to Stockport County one place behind in 4th to leapfrog the Bulls into the final automatic promotion spot.

Key Moments

A brilliant piece of individual skill from Gary Hooper saw the visitors from the take the lead on 18 minutes. A tight one-two on the edge of the Bees box saw the forward take the ball with the outside of his boot before his shot had too much power for Ben Hamer. The Bulls were then awarded a controversial penalty after Dean Beckworth was adjudged to have been fouled following a corner. Theo Robinson stepped up and sent Hamer the wrong way, only for the referee to order a retake. Robinson opted to shoot in the same direction but this time Hamer saved down to his left-hand side. Just a minute later though Hereford had their second as Robinson atoned for his error and coolly rounded Hamer. Following the interval Bulls substitute Simon Johnson wrapped up the contents with his first involvement. As the final whistle blew and pitch invasion ensued in west London – jubilation for the visiting Hereford fans.

Half-time Brentford teaser

What nation did former player Sam Sodje represent at international level?

Ghana

South Africa

Niger

Nigeria

Brentford starting Lineup

B Hamer

C Pead (Subbed off 78')

A Bennett

K Osborne

R Dickson

W Brown

K O'Connor

G Smith (Subbed off 55')

G Poole

A Connell

R Shakes

Substitutes

M Heywood (Subbed on 78')

J Mousinho (Subbed on 55')

O Sankofa

R Reid

S Brown

Referee: Scott Mathieson

Attendance: 6,246

Stay safe Bees fans!

HAMPTON & RICHMOND BOROUGH

Hampton 1 – 0 East Thurrock United

25/4/13

Pre-match teaser

Which of these following grounds in the Football League have Hampton not played at?

Whaddon Road

Griffin Park

Kingsmeadow

Moss Rose



HRBFC

Key moments

Hampton arrested the poor recent run off form which had seen them come perilously close to the relegation zone with a victory under the Beveree floodlights against East Thurrock. Hampton's first chance came on 11 minutes as East Thurrock keeper David Hughes made a mistake in his clearance which allowed Charlie Moon to volley, but his effort was straight at the keeper. For the visitors Mitchell Gilbey was proving a threat and his blazed over from eighteen yards with their best effort on the first half. After the interval, the Rocks fashioned the first chance through Neil Richmond, whose volley hit the bar with Chiweshe stranded. The Beavers took the lead through Joe Turner as he latched onto a loose ball and struck a brilliantly controlled half volley into the corner of the net. East Thurrock pilled on the pressure in the final fifteen minutes but could not find the equaliser with Chiweshe denying Sam Higgins.

Hampton starting lineup

R Chiweshe

T Brewer

G Wells

S Lake

D Powell

J Roberts

L Wanadio (Subbed off 75')

T Hickey

D Tarpey (Subbed off 76')

C Moone (Subbed off 90')

J Turner (Goal 55')

Substitutes

J Simmonds (Subbed on 75')

A Wickham (Subbed on 90')

B Harris (Subbed on 76')

B Osman

J Barton

Attendance: 136

Stay safe Beavers fans!

Teaser Answers

Brentford = D

Hampton = B

PUBS TO 'RE-OPEN' NEXT WEEK

- Pubs will re-open for customer collection and delivery
- A national initiative to save our beloved pubs
- Supported by Fever-Tree, Sipsmith, Tyrrell's Crisps and Brakes
- Government support currently being discussed

pub2me.com is now live. A COVID-19 not for profit initiative, it will potentially connect thousands of pubs with millions of customers who wish to enjoy pub drinks and food at home.

Pubs throughout the UK are currently uploading their menus on to the Pub2Me website, ready for a national consumer launch next week.

We are currently discussing government support, celebrity support via social media and sponsorship from major companies. It has not been the best of times for pubs over the past few years, but this latest threat cannot be allowed to bring down such an essential and treasured part of our communities and social lives.

Spokesman for Pub2Me Chris Hyde comments 'This initiative has come to life following a clear Government 'Thumbs Up' for pubs to operate a food and drinks delivery and collection service. Also the UK public has been very vocal about missing their beloved pubs. We all need some positive news, and this should be a real tonic for everyone'

A small number of pubs across the UK went live with Pub2Me earlier this week and are overjoyed with the response so far. The Elite Pubs Group were one of the first and spokesperson for the group Sian Timmermans comments 'We have just re-opened six of our fabulous pubs specifically to service the needs of our loyal customers and communities, by offering a collection service featuring some of our most popular food and drink items at very reasonable prices. Pub2Me is an extremely exciting and positive initiative and we are so pleased to be part of it'



Rugby Football Union Staff Support the NHS

Two of the Rugby Football Union's medical team – Dr Katy Hornby, England Women's senior team doctor and Steffan Griffin, sports medicine training fellow – are focussing their time and efforts to support on the NHS frontline in A&E.

Dr Katy Hornby decided to return to the NHS to help during the pandemic and is working in the emergency department at Charing Cross Hospital, a role she is able to fulfil part-time while still being an RFU employee.

She said: "The RFU medical team has been very supportive of my request to go back and help the NHS in these very difficult circumstances. I've worked at Charing Cross previously and there are still personnel there I worked with before. Everyone has been really friendly and welcoming. The key to managing this type of work has always been strong teamwork and this crisis has really emphasised this.

"In addition, the unity of purpose and determination to overcome the challenges Covid-19 presents has been outstanding. This relates closely to what we aspire to in rugby.

"This situation is not something any of us expected to be faced with and I hope it's not something we have to see again. You certainly see the very best in people, and it is really inspiring that people who aren't necessarily connected to anyone working in the NHS are still going above and beyond to help others. The various contributions of the rugby community illustrate this so clearly from simple personal gestures, to helping neighbours, to using our facilities to support the NHS.

"The Thursday evening '#ClapForCarers' and 99-year-old army veteran Captain Tom Moore, who has walked 100 laps of his garden to raise millions of pounds, really makes you feel proud of the role that you do. These gestures make you feel that even though you're putting your life at risk going to work, it's worth it.

"Getting through this pandemic and the repercussions for health care on the other side, while keeping as much of the population as possible fit and healthy will take some time."

Dr Steffan Griffin, who works for the RFU part-time as a sports medicine training fellow, has increased his hours at St. Mary's Hospital in Paddington to around forty hours a week, while still working for the RFU and completing a PhD.

"It became clear in February that there was a need for more help in A&E and, as I had continued to work there following my post graduate training, I was only too happy to increase my hours and support the fantastic team there.

"Throughout the pandemic we've seen communities come together, including the rugby community, whether that's through building test centres, players talking to vulnerable fans over the phone or club's catering teams delivering meals to NHS staff, and it's been lovely to witness. I also work with the academy and A League sides at London Irish and they've been sending the A&E team loads of food, as have many other local businesses, which is so appreciated during long shifts. I've learned a lot during the last few weeks but some of the main things I've taken from this situation is the importance of taking things day by day; the importance of daily exercise; and appreciating all the simple things in life. I'm also really lucky to have lots of support from friends, family and all the people I work with in hospital and the rugby world. Working at rugby matches helps you to be prepared for anything and I've carried that into my work with the NHS. My message to everyone around the country is to say thanks for staying home, and for supporting the NHS in particular. Everyone working in the NHS has been unbelievably appreciative of the public's support for government measures. Please keep it up for a bit longer and we'll get through this."

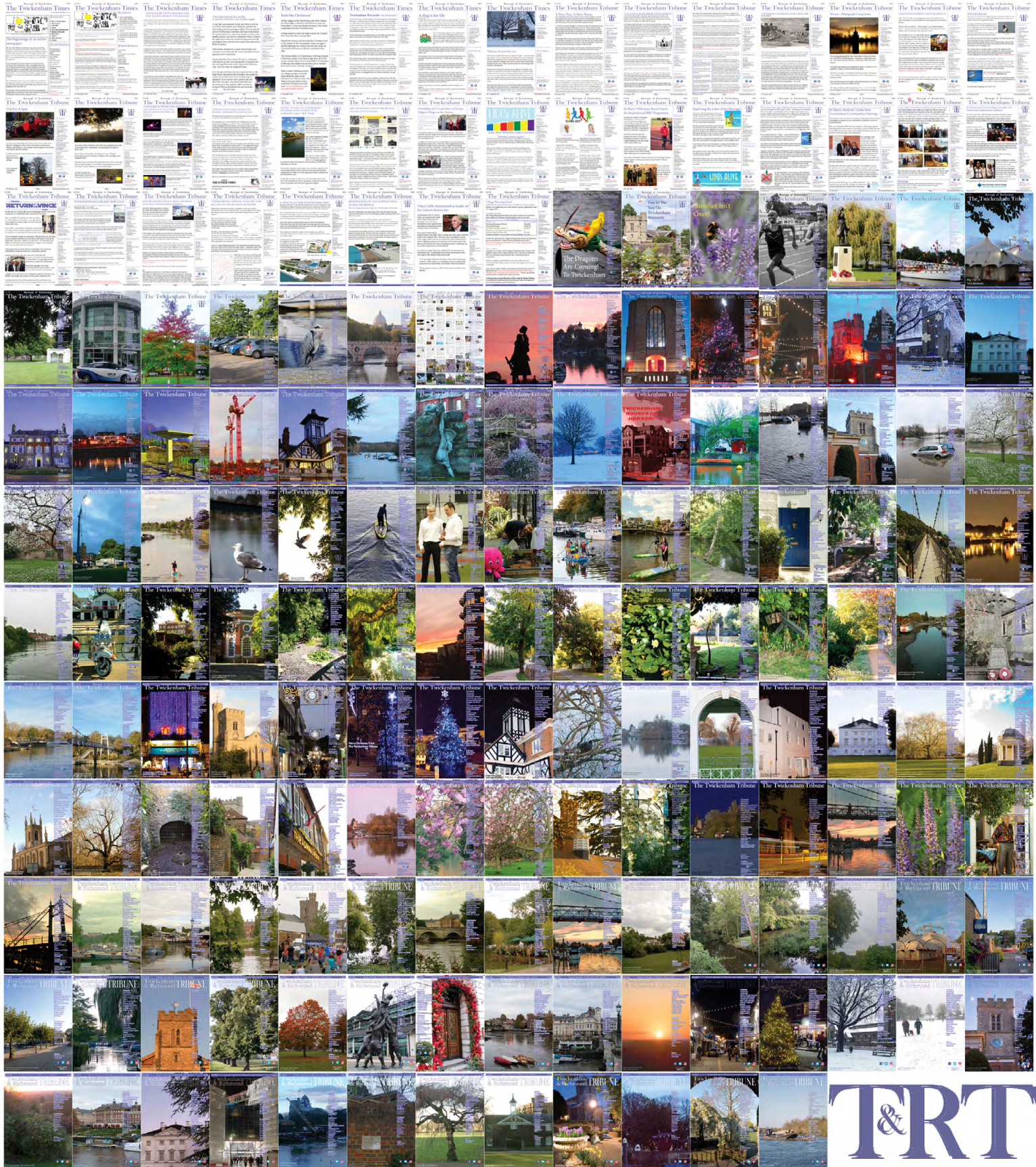
In addition to Katy and Steffan's incredible work, many other RFU staff are also supporting the NHS through its volunteer programme either with calls to elderly and vulnerable people, delivery of medicine, food shopping, volunteering at NHS Nightingale, organising weekly moral boosting quizzes, encouraging daily exercise and just keeping people smiling.

England Women Sevens captain Abbie Brown is signed up as a community response volunteer while Red Roses back Lydia Thompson, a qualified occupational therapist, has contacted the NHS about returning during the outbreak.

Twickenham Stadium became one of the latest COVID-19 drive-through test sites this week, in a rapidly expanding network of testing sites being set up around the UK, and the RFU is grateful for the opportunity to support key workers during this severe national crisis with its site and staff to support operationally.

In addition to the testing facility Twickenham is providing a base for London Ambulance Service to use as crews change shifts.

181 Editions of the Twickenham & Richmond Tribune online - Lots to read: News, Reviews, History and On-going Sagas in this Borough in South-West London.



Half Page

Quarter Page
Landscape

Quarter Page Portrait

Eighth Page

Eighth Page
Landscape

Example advert sizes shown above

Thousands read The Twickenham & Richmond Tribune

If you are reading this you could be advertising your business with
The Twickenham & Richmond Tribune. Community rates are
available

Contact: advertise@TwickenhamTribune.com

View ad details at www.TwickenhamTribune.com/advertise

Contact

contact@TwickenhamTribune.com
letters@TwickenhamTribune.com
advertise@TwickenhamTribune.com



Published by:

Twickenham Alive Limited (in association with World InfoZone Limited)
Registered in England & Wales
Reg No 10549345

The Twickenham Tribune is registered with the ICO under the Data
Protection Act, Reg No ZA224725

©Twickenham Alive Limited. All rights reserved. No part of this publication may be used or reproduced without the permission of Twickenham Alive Limited. While we take reasonable efforts, this online newspaper cannot be held responsible for the accuracy or reliability of information. The views and opinions in these pages do not necessarily represent those of Twickenham Alive Limited or The Twickenham & Richmond Tribune. [Terms & Conditions](#)